



THE *Aria* Basement

 4725
  6
  3 FULL
 1 HALF
  3

FEATURES

- Award Wining Primary Suite!
- Oversized Pantry
- Huntwood Dovetail/Soft Close Cabinets
- Large Rec Room Downstairs
- 8' X 5' Kitchen Island
- Walk-in Closets & Ample Storage
- Large Home Office/6th Bedroom
- Mudroom with Built-in Bench
- Fully Tiled Primary Walk-Around Shower
- Large Covered Deck & Patio



Find more floorplans at WWW.HOMESBYPRODIGY.COM
 2055 N Steptoe St, Ste 110, Kennewick WA 99336 509-737-6227

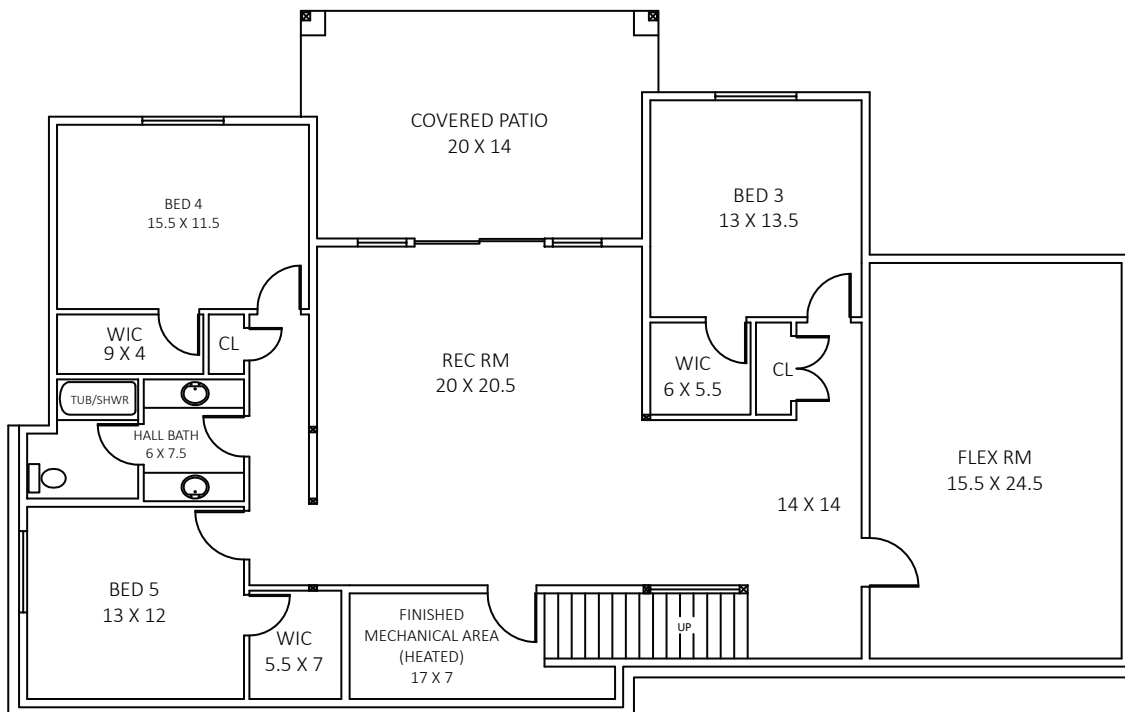
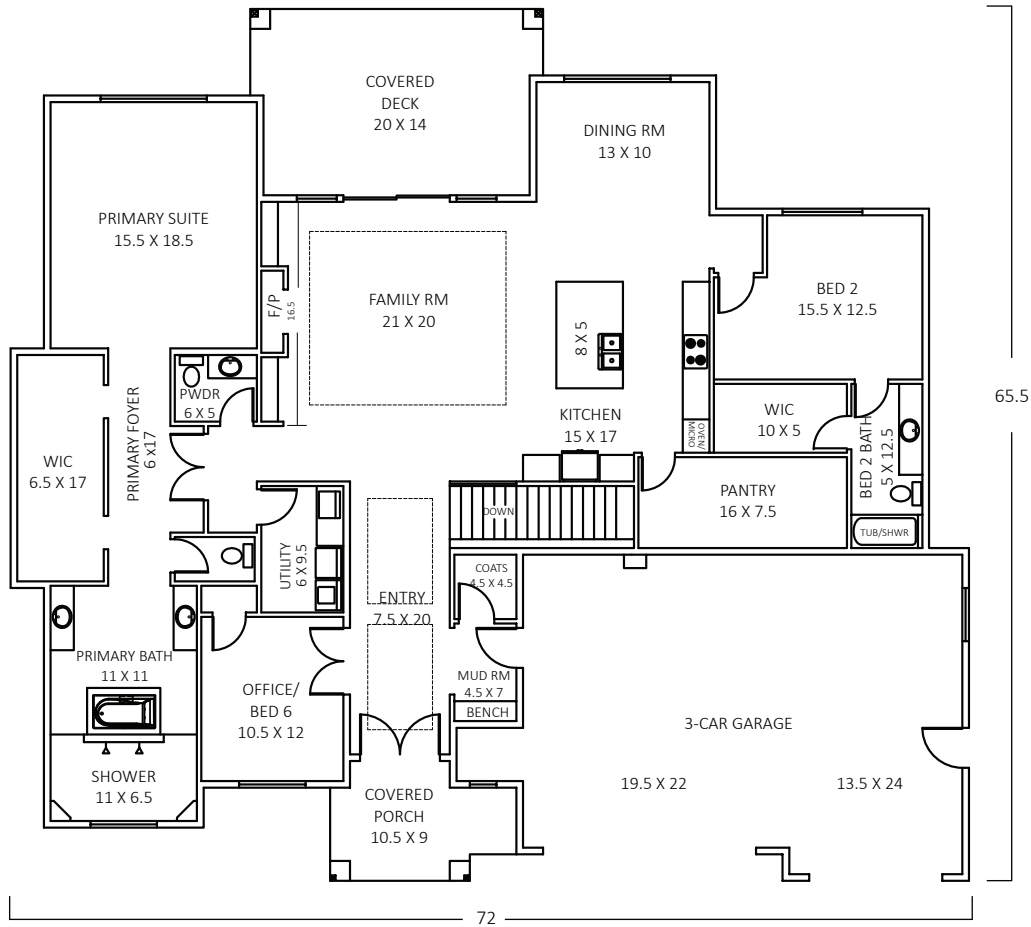
Photos are of previously built homes and may contain upgrades.



THE BEST EXPERIENCE

THE Aria Basement

MAIN 2620 SF
BASEMENT 2105 SF



Prodigy Homes, Inc. reserves the right to modify floor plans, designs and prices. Dimensions and square footage are approximate.

© Prodigy Homes™ 2023