



THE Viola II

3354 5 3 FULL 3

FEATURES

- Fully Tiled Primary Walk-in Shower
- Oversized Primary Walk-in Closet
- Large Open Kitchen, Dining, & Family
- Built-in Entertainment Center
- 8' X 5' Kitchen Island
- Large Pantry with Ample Shelving
- Sizeable Upstairs Storage Room
- Large Covered Patio & Deck



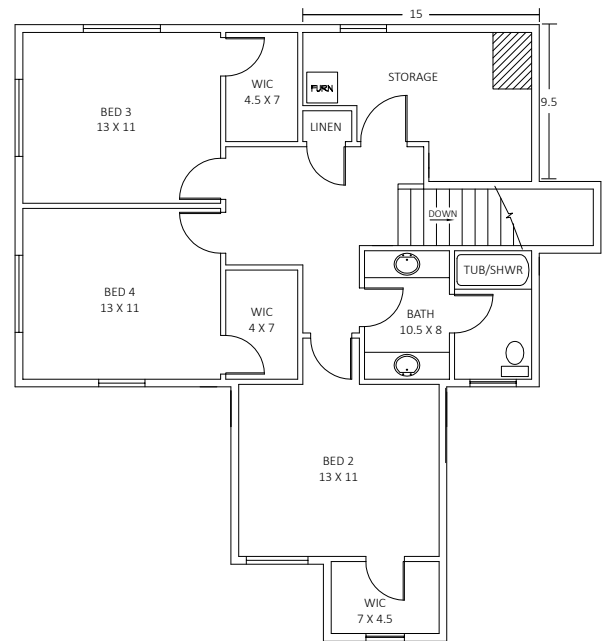
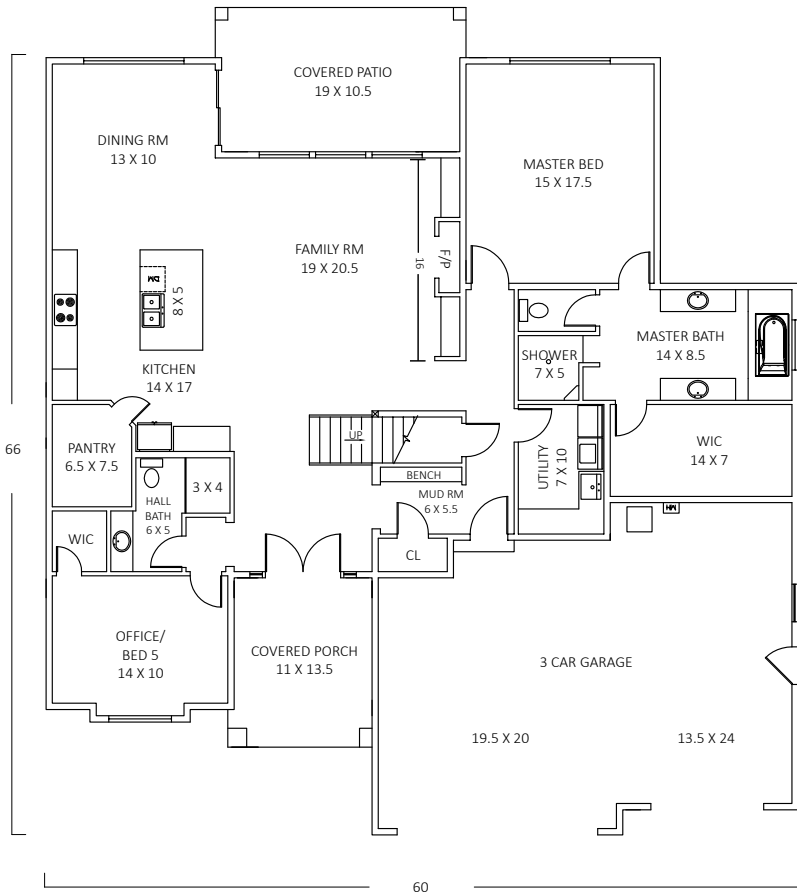
Find more floorplans at WWW.HOMESBYPRODIGY.COM
2055 N Steptoe St, Ste 110, Kennewick WA 99336 509-737-6227

Photos are of previously built homes and may contain upgrades.



THE Viola II

MAIN 2188 SF
UPSTAIRS 966 SF



Prodigy Homes, Inc. reserves the right to modify floor plans, designs and prices. Dimensions and square footage are approximate.