



THE *Soprano* Basement

 3251  5  3 FULL  3

FEATURES

- Trayed Ceilings at Entry & Family
- Sizeable Rec Room Downstairs
- Large Covered Deck & Patio
- Walk-in Closets w/Built-in Shelving
- Built-in Entertainment Center
- Drop-in Soaker Tub in Primary Bath
- Full Tiled Primary Walk- In Shower
- 8 X 5' Kitchen Island
- Large Pantry with Ample Shelving



Find more floorplans at WWW.HOMESBYPRODIGY.COM
2055 N Steptoe St, Ste 110, Kennewick WA 99336 509-737-6227

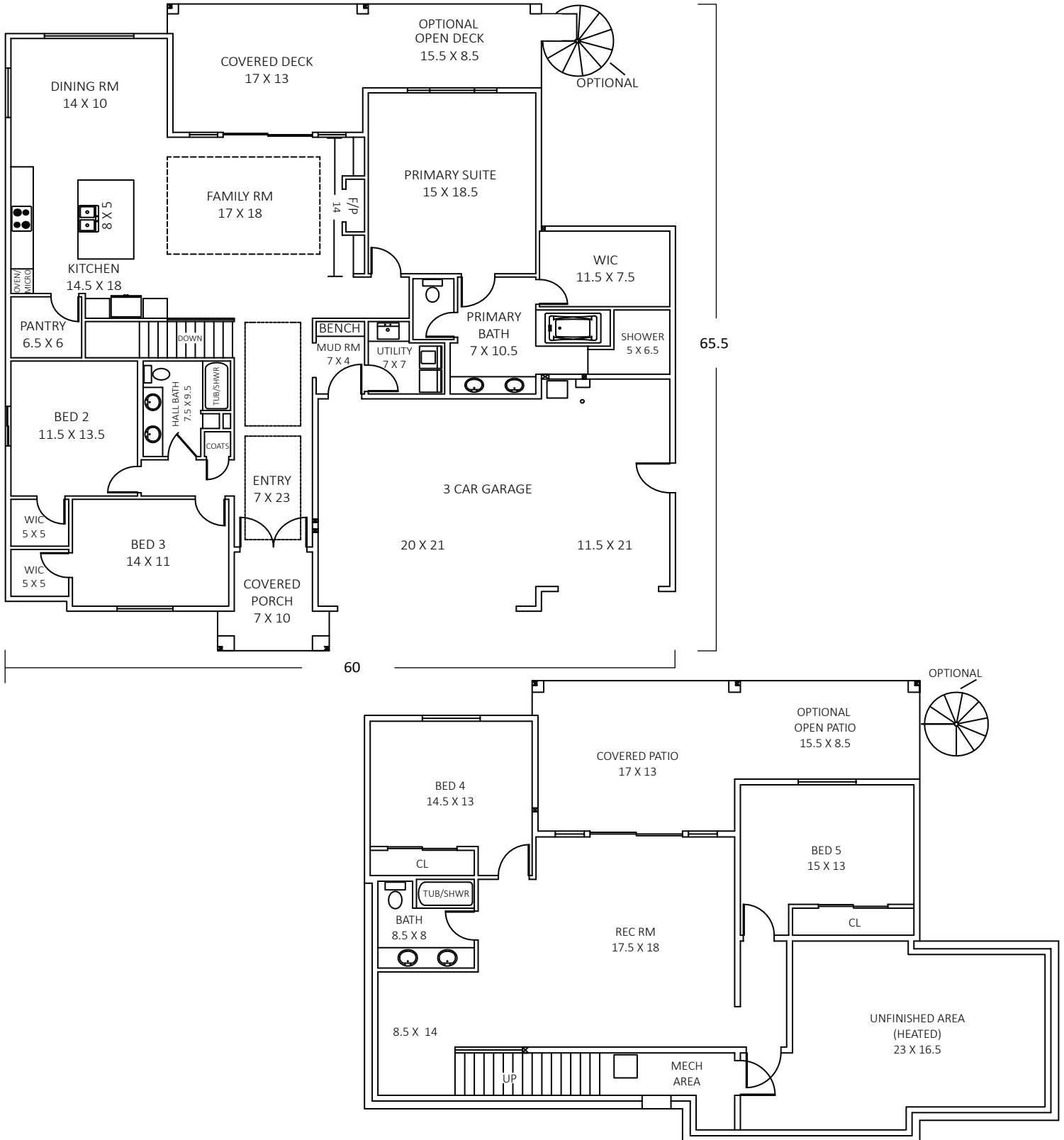
Photos are of previously built homes and may contain upgrades.



THE BEST EXPERIENCE

THE Soprano Basement

MAIN 2256 SF
BASEMENT 995 SF



Prodigy Homes, Inc. reserves the right to modify floor plans, designs and prices. Dimensions and square footage are approximate.

© Prodigy Homes™ 2023