



THE Soprano

2256 3 2 FULL 3

FEATURES

- Double Tray Ceiling w/LEDs at Foyer
- Trayed Ceiling w/LEDs at Family
- Large Covered Patio
- Large Kitchen, Family, & Dining
- 8' X 5' Kitchen Island
- Large Pantry with Ample Shelving
- Walk-in Closets w/ Built-in Shelving
- Built-in Entertainment Center
- Drop in Soaker Tub in Primary Bath
- Fully Tiled Walk-in Shower in Primary Bath



Find more floorplans at WWW.HOMESBYPRODIGY.COM
2055 N Steptoe St, Ste 110, Kennewick WA 99336 509-737-6227

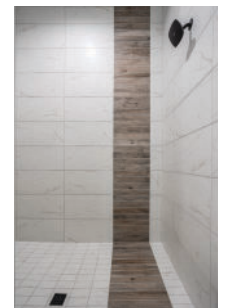
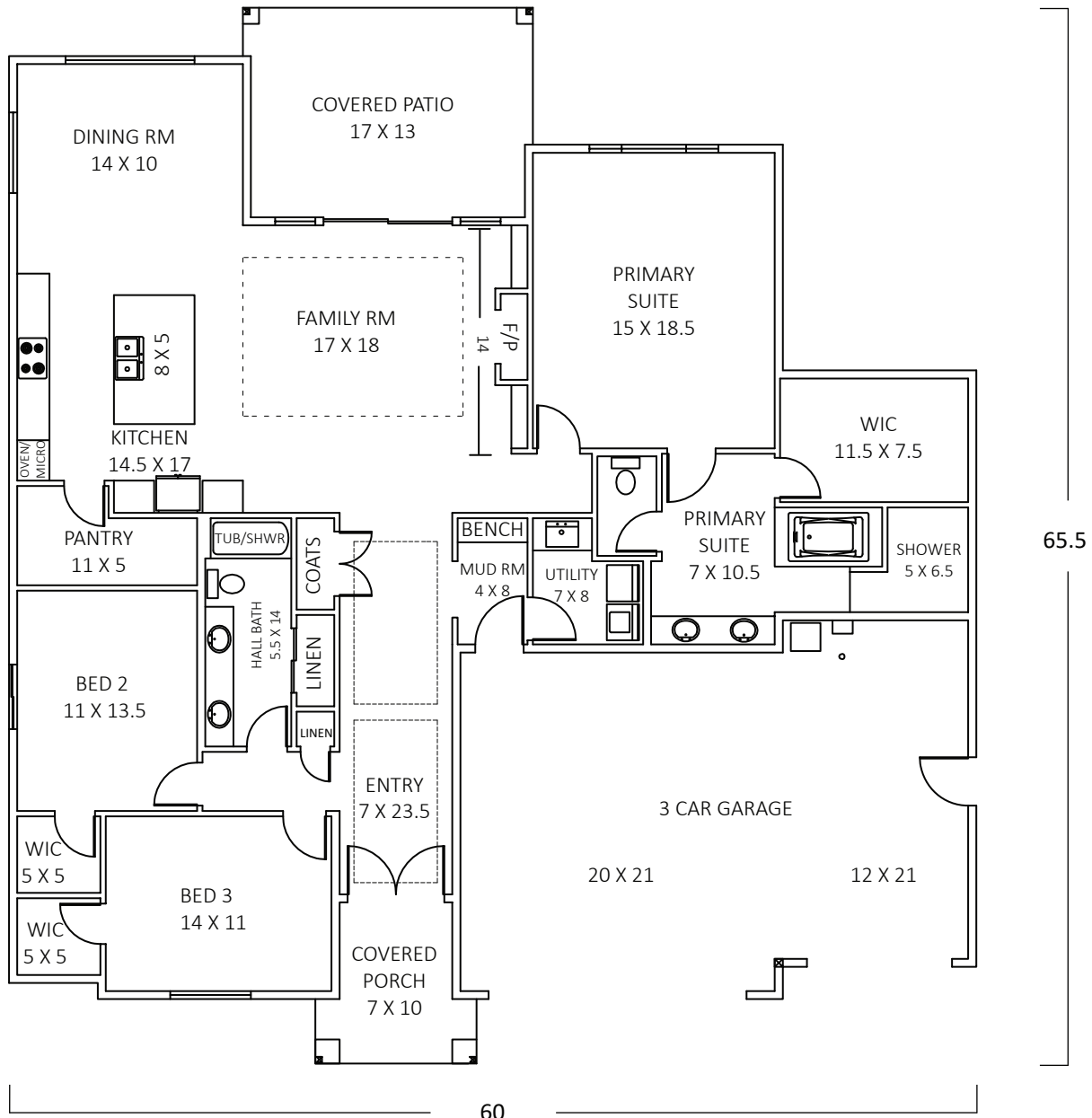
Photos are of previously built homes and may contain upgrades.



THE Soprano

2256 SF

THE BEST EXPERIENCE



Prodigy Homes, Inc. reserves the right to modify floor plans, designs and prices. Dimensions and square footage are approximate.

© Prodigy Homes™ 2023